



**SABBI**

**S12**

# S12

S12 is a variety with high yield potential, high percentage plumpness and average kernel nitrogen and is recommended for all the production areas in the Southern Cape (Dry land)

Leaf Blotch



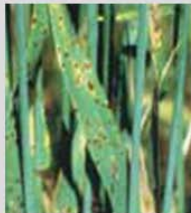
Resistant

Net-form  
Net Blotch



Moderately  
Susceptible

Spot-form  
Net Blotch



Moderately  
Susceptible

Leaf Rust



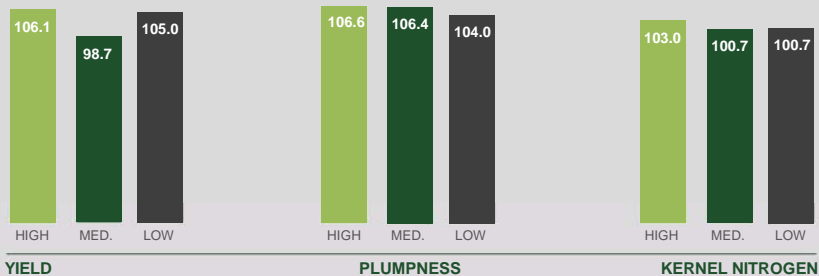
Resistant

Physiological  
Leaf Spot



Absent

Long term regional treated data (2 years, %) compared to the control in the Southern Cape



(Erica = 100)

**Planting date** S12 has an average maturity and must be sowed approximately the same time as Erica

**Planting density** S12 a good tillering variety with prostrate early growth, and can be planted at a seed density similar to Erica.

**Kernel Nitrogen** Husbandry trial data shows that S12 achieve similar kernel nitrogen levels compared to Erica. The suggested fertiliser rates should be the same as Erica

**Straw** Medium straw with good straw strength

**Peduncle strength** Medium strong peduncle.




**Average yield (kg/ha)**

Area	Variety	2011	2010	2009	2008	2007	2006	2005
High Potential	Erica	6982	4208	5996	5454	5745	4679	4737
	S12	7716	4152	-	-	-	-	-
Medium Potential	Erica	6219	2978	4658	2978	3606	4668	4094
	S12	6544	2532	-	-	-	-	-
Low Potential	Erica	6888	2297	3823	4320	4838	3780	4577
	S12	7601	2039	-	-	-	-	-

**Average percentage plumpness (> 2.5mm)**

Area	Variety	2011	2010	2009	2008	2007	2006	2005
High Potential	Erica	81.3	95.1	89.0	92.4	91.3	81.7	80.6
	S12	90.7	97.4	-	-	-	-	-
Medium Potential	Erica	74.3	84.9	94.4	93.8	86.7	84.1	89.6
	S12	76.6	92.8	-	-	-	-	-
Low Potential	Erica	89.2	91.3	89.9	96.0	87.3	86.2	85.0
	S12	92.4	95.3	-	-	-	-	-



## Average Kernel Nitrogen

Area	Variety	2011	2010	2009	2008	2007	2006	2005
High Potential	Erica	1.95	1.67	1.84	1.83	1.66	1.87	1.69
	S12	1.94	1.79	-	-	-	-	-
Medium Potential	Erica	2.10	1.94	1.59	1.83	1.66	1.62	1.73
	S12	2.12	1.95	-	-	-	-	-
Low Potential	Erica	1.94	2.11	1.59	1.93	1.59	1.99	2.23
	S12	2.00	2.08	-	-	-	-	-

