



SABBI

Erica

Erica

SabbiErica is a variety with high yield potential, medium/high percentage plumpness and average kernel nitrogen and is recommended for all the production areas in the Southern Cape (Dry land)

Leaf Blotch



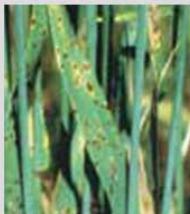
Susceptible

Net-form
Net Blotch



Moderately
Susceptible

Spot-form
Net Blotch



Susceptible

Leaf Rust



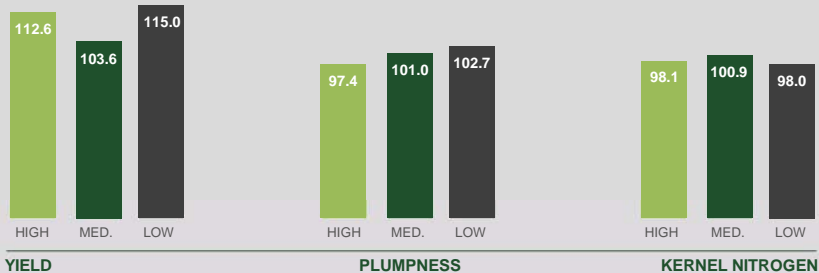
Susceptible

Physiological
Leaf Spot



Present

Long term regional treated data (9 years, %) compared to SSG 564



(SSG 564 = 100)

Planting date

Erica has an average maturity and must be sowed approximately the same time as SSG 564.

Planting density

Erica is a good tillering variety with prostrate early growth, and can be planted at a seed density 5% lower than SSG 564.

Kernel Nitrogen

Husbandry trial data shows that Erica achieve similar kernel nitrogen levels compared to SSG 564. The suggested fertiliser rates should be the same as SSG 564.

Straw

Medium straw with good straw strength..

Peduncle strength

Medium strong peduncle.




Average yield (kg/ha)

Area	Variety	2011	2010	2009	2008	2007	2006	2005	2004
High Potential	SSG 564	6418	3825	4889	5212	4609	3968	4515	3465
	Erica	6982	4208	5996	5454	5745	4679	4737	3696
Medium Potential	SSG 564	5210	2374	3926	4619	3782	4291	3642	3106
	Erica	6219	2978	4658	2978	3606	4668	4094	2909
Low Potential	SSG 564	5755	1985	2968	3473	4942	3607	3340	2904
	Erica	6888	2297	3823	4320	4838	3780	4577	3328

Average percentage plumpness (> 2.5mm)

Area	Variety	2011	2010	2009	2008	2007	2006	2005	2004
High Potential	SSG 564	93.2	94.1	92.5	92.5	93.6	83.3	85.1	93.8
	Erica	81.3	95.1	89.0	92.4	91.3	81.7	80.6	88.8
Medium Potential	SSG 564	75.1	76.0	92.1	92.3	90.1	84.4	88.9	87.9
	Erica	74.3	84.9	94.4	93.8	86.7	84.1	89.6	85.9
Low Potential	SSG 564	82.8	83.9	88.1	97.2	89.0	84.6	84.4	85.2
	Erica	89.2	91.3	89.9	96.0	87.3	86.2	85.0	88.5



Average Kernel Nitrogen

Area	Variety	2011	2010	2009	2008	2007	2006	2005	2004
High Potential	SSG 564	1.97	1.77	1.91	1.83	1.77	1.83	1.74	1.59
	Erica	1.95	1.67	1.84	1.83	1.66	1.87	1.69	1.51
Medium Potential	SSG 564	2.08	1.94	1.64	1.81	1.67	1.59	1.74	1.67
	Erica	2.10	1.94	1.59	1.83	1.66	1.62	1.73	1.76
Low Potential	SSG 564	2.00	2.11	1.85	1.76	1.59	1.88	2.38	1.95
	Erica	1.94	2.11	1.59	1.93	1.59	1.99	2.23	1.92

Long term quality characteristics as percentage deviation from SSG 564 (Micromalting results)

